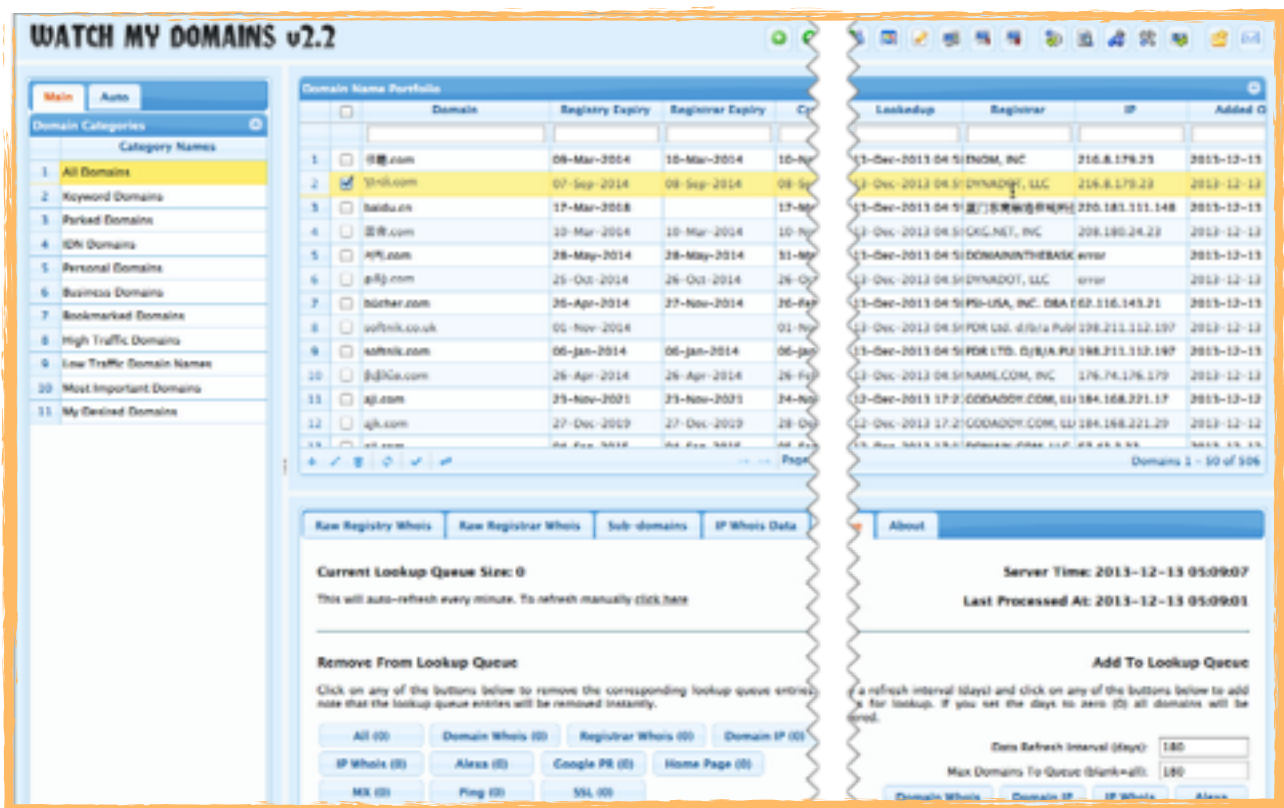


WATCH MY DOMAINS SED



Web Based Domain Name Management

Watch My Domains SED is a powerful Ajax powered web application for Domain Portfolio Management with a fast desktop like interface. It supports all modern web browsers. This is an advanced application primarily meant for use within a corporate network. A single installation of the server edition can be accessed by multiple users from different locations.

System Requirements

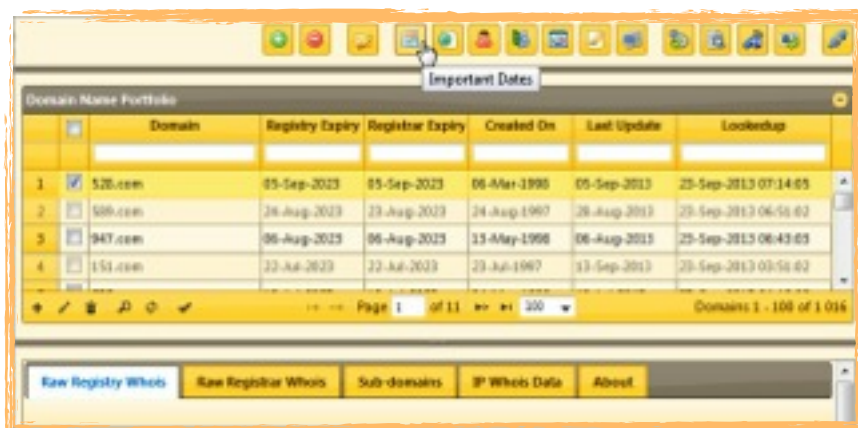
- ◆ Linux / Windows Server
- ◆ SSH (Secure Shell) or Cron job management
- ◆ Web Server (Apache is recommended)
- ◆ PHP 5.2.x, 5.3.x or 5.4.x (with mb_string module).
- ◆ MySQL 5.x or MariaDB
- ◆ ionCube Loader installed on server. (only for trial & standard editions)

Quick, Easy Installation

You can install Watch My Domains SED in about 3-5 minutes. You just need to edit a configuration file to specify the basic database credentials. The installation will happen automatically when you run the application for the first time from your browser.

Single Point Interface To Monitor All Domain Related Data

You can use Watch My Domains SED to monitor **domain expiry dates**, IP addresses the domains point to, **name servers**, contact addresses used for administering domain name records, **SSL certificates** associated with the domain names, **MX records**, web visibility data and much more. You can also **attach notes** to each domain.



The screenshot shows a web application interface with a table titled "Domain Name Portfolio". The table has columns for "Domain", "Registry Expiry", "Registrar Expiry", "Created On", "Last Update", and "Lookedup". Below the table are navigation buttons: "Raw Registry Whois", "Raw Registrar Whois", "Sub-domains", "IP Whois Data", and "About".

	Domain	Registry Expiry	Registrar Expiry	Created On	Last Update	Lookedup
1	52b.com	05-Sep-2013	05-Sep-2013	06-May-1998	05-Sep-2013	25-Sep-2013 07:14:05
2	50b.com	26-Aug-2013	23-Aug-2013	24-Aug-1997	26-Aug-2013	25-Sep-2013 06:51:02
3	947.com	06-Aug-2013	06-Aug-2013	13-May-1998	06-Aug-2013	25-Sep-2013 06:43:05
4	151.com	22-Jul-2013	22-Jul-2013	23-Jul-1997	13-Sep-2013	25-Sep-2013 03:51:02

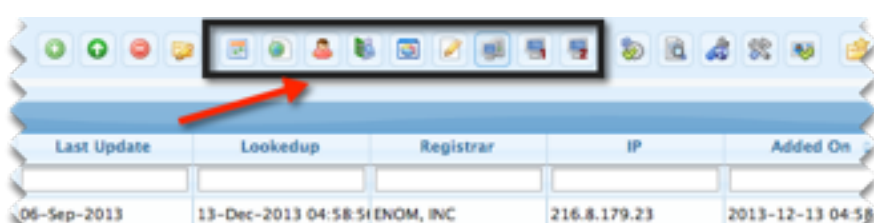
Fast, Ajax Powered 'Desktop Like' Interface

The Ajax powered interface is smooth and fast. It works on all modern browsers and you can access the application from **desktops**, laptops, **smart phones** and **tablets**. It also supports a number of different visual themes.



User Configurable Display Columns

There are nine different display groups and each of them can be configured to display the exact columns you want. You can



The screenshot shows a table with columns: "Last Update", "Lookedup", "Registrar", "IP", and "Added On". A red arrow points to the "Lookedup" column header.

Last Update	Lookedup	Registrar	IP	Added On
06-Sep-2013	13-Dec-2013 04:58:51	ENOM, INC	216.8.179.23	2013-12-13 04:58

quickly see any and all the important data by switching between different display groups.

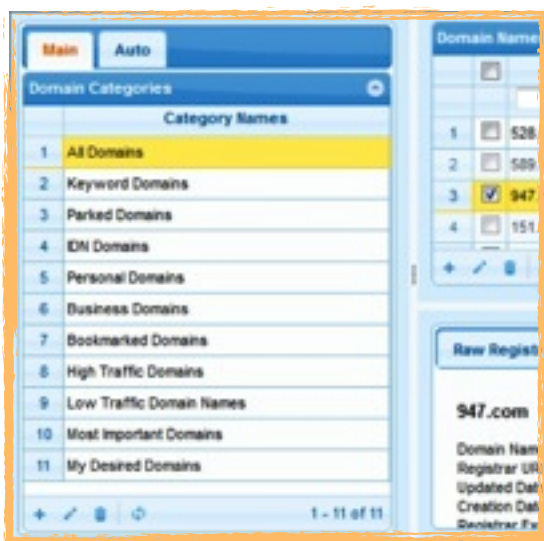
Custom Data Columns with CSV Import

Watch My Domains supports any number of **custom data columns**. You can create your own custom fields and enter data manually or import data from CSV files. The custom fields may be in **languages other than English**.

Admin Configurable Whois & Data Extraction Setup

Watch My Domains supports **all TLDs and ccTLDs** that have a valid port 43 whois server. You can add support for additional TLDs very easily.

The configurable **extraction tokens** in Watch My Domains make it very easy to retrieve the required data from the raw whois text.



Group Domains Into Categories

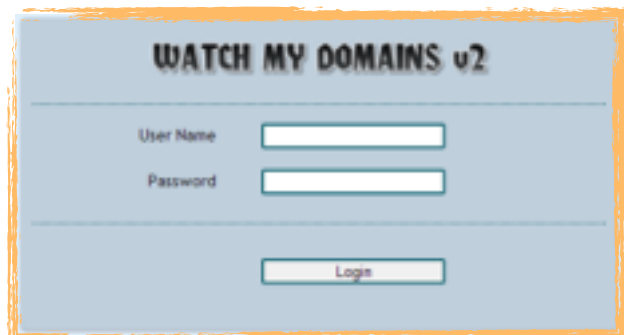
You can group domains into **different categories**. If you enable **user authentication** you can also assign domain categories to different users so that each user can manage only the domains that are assigned to them.

A separate group 'Auto Queries' (set of pre-defined SQL queries) help you find just the domains you are interested in.

Multi User Support

Create **different users** and assign one or more **domain categories** they can administer. This makes it easy for managing domains that belong to **different departments**.

You can also assign "**read-only**" access right to some users. These users will be able to view the domains but will not be able to make changes.



Multi Server Installation with a Single Central Database

You can install Watch My Domains on multiple servers (Professional Edition License Required) and have them update a single centrally located data. This is an extremely

powerful feature that allows you to process large number of domains using easily available and inexpensive cloud servers.

Manage Sub-Domains

You can **manage sub-domains** associated with each of your domains. The application will track the associated **SSL certificates** and **IP addresses**. You can also attach custom notes on each sub-domain.

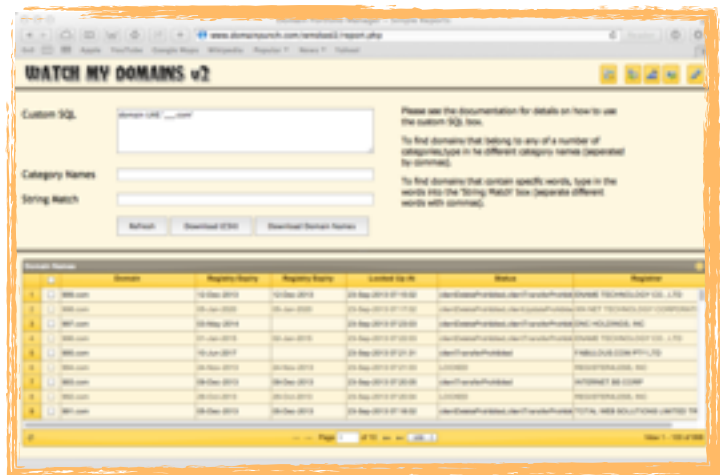
Generate Custom Domain Name Reports, Download as CSV

You can use the **Report Generation** tool in Watch My Domains SED to create custom domain name reports and then download the corresponding data in CSV format.

It is very easy to create reports, For example, you can use a query like ...

`registry_expiry > '2016-05-01'`

... to list all domain name records that expire after 2016-05-01.



In addition to the report generation tool, you can use your own scripts that pull records from the database to create custom reports. Watch My Domains SED includes a sample that demonstrates this. You can use it as a quick template to create your own scripts.

Email Reports

You can also make the application create a **daily summary** of your domain portfolio (for example, all the domains that will expire in next 30 days) and **email** it to a specific address.

International Domain Name (IDN) Support

Watch My Domains Supports IDN (International Domain Names). There is nothing extra you need to do. You can enter domain names that use other



language words.

Both IDNA-2003 and IDNA-2008 formats are supported. However IDNA-2008 is the default format. You can change it if you want to.

Branding / White Label

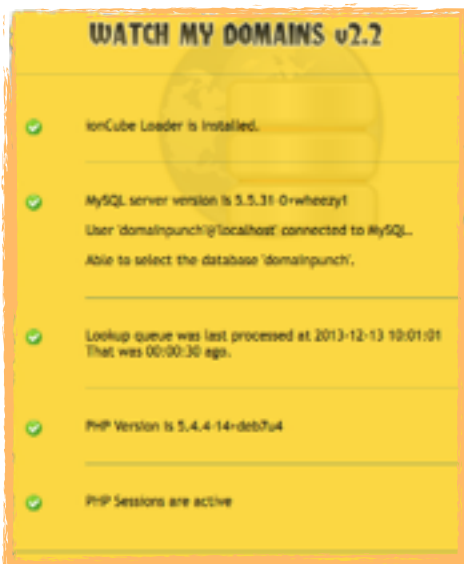
You can easily change the branding elements in the application after purchase. These include the header image / logo and toolbar buttons that link to your websites.

Maintenance and Support

We provide quick and efficient technical support. In addition to our normal free support options we also offer **tailor made maintenance plans** that include **free upgrades** (for up to 3 years) to the latest version, **custom coding**, priority application **installations**, immediate bug fix support and more. There is also a platinum support option that includes custom feature additions, integration support and script modifications. Please see pricing for additional information.

Diagnostic Tools

The diagnostic tools help you quickly identify any problems associated with the installation. The checks include...



- ◆ PHP and MySQL version
- ◆ ionCube Loader installation
- ◆ Ability to connect to database
- ◆ Cronjob functioning
- ◆ Status of PHP Sessions

In addition to the diagnostic tests, the **about box** in the main interface lists a number of information related to the current session. You can use it to find information about the currently logged user and his / her access rights.

PRICING

	Standard	Professional	Gold	Platinum
Full Source Code	NO	YES	YES	YES
Free Upgrades	1 Year	1 Year	3 Years	3 Years
Installation Support	Limited	Limited	YES, Maximum 2 Servers	YES
Custom Code Development	NO	NO	NO	YES, Maximum 30 hours per year
Server Maintenance	NO	NO	NO	YES
Price	\$450	\$1950	\$2950	\$4950

All prices are in USD.

If you purchase the Professional license and above you can install the application on any number of servers belonging to the same organization / company. Standard edition may be installed on only a single server.

Custom code development options can be used to add features that are not part of the regular version of the software / application.

Server Maintenance includes installation of all updates and upgrades, **configuration changes** to meet specific custom requirements and any **database optimization** that may be needed. You will need to provide access to the server.

Purchase Links

Standard & Professional Editions

<http://www.domainpunch.com/watch-my-domains-sed/buy.php>

Gold and Platinum Editions

<http://www.domainpunch.com/watch-my-domains-sed/advbuypp.php>

Contact Information

Softnik Technologies Pvt. Ltd.

<http://www.softnik.com/center/contact.php>